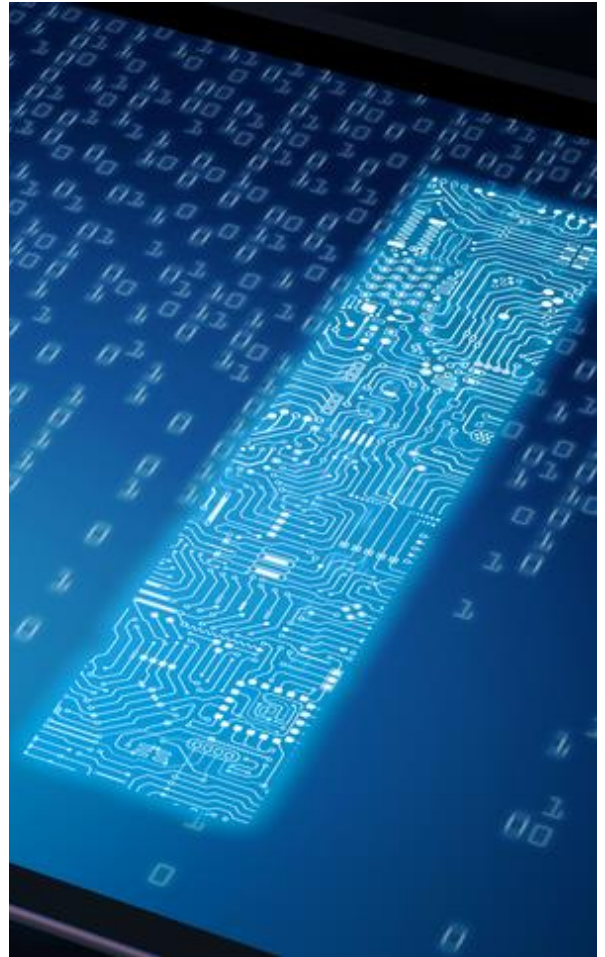

The impact of AI on minority community



VBA STEM Today

Learning Labs





The impact of AI on minority community

The impact of AI on minority communities is a complex and multifaceted issue that requires careful consideration. While AI technologies have the potential to bring about positive changes and advancements, there are also concerns about their impact on minority groups. Here are some key aspects to consider:

1. **Representation:** Lack of diversity in the development and decision-making processes of AI technologies can contribute to biased outcomes. It is crucial to ensure diverse representation in the teams designing, developing, and deploying AI systems to address the needs and perspectives of minority communities.
2. **Algorithmic Discrimination:** Minority communities may experience discrimination due to algorithmic decision-making in various domains, such as finance, criminal justice, and hiring. Unintended consequences of algorithms can result in disparities and inequalities, impacting the opportunities and experiences of minority individuals.
3. **Privacy Concerns:** AI technologies often involve the collection and analysis of large amounts of data. Minority communities may be particularly vulnerable to privacy violations, surveillance, and profiling. Protecting the privacy rights of individuals in these communities is essential.
4. **Access and Inclusion:** Ensuring equal access to AI technologies is crucial to prevent the digital divide from widening. Lack of access to AI tools and education can further marginalize minority communities, hindering their ability to benefit from technological advancements.

-
5. **Job Displacement:** Automation driven by AI has the potential to impact employment in certain industries. Minority communities may be disproportionately affected by job displacement, and there is a need for strategies to reskill and upskill workers to adapt to the changing job landscape.
 6. **Ethical Considerations:** The ethical implications of AI on minority communities must be carefully examined. Transparent and accountable AI practices, as well as the incorporation of ethical guidelines, are essential to ensure that AI technologies serve the interests of all communities.

Addressing these challenges requires a collaborative effort involving policymakers, technologists, ethicists, and community stakeholders. It is essential to implement policies and practices that promote fairness, equity, and inclusivity in the development and deployment of AI technologies.